

SALE

PRIME WAREHOUSE / DISTRIBUTION DEVELOPMENT SITE

5025 COLUMBUS ROAD @ INTERSTATE DRIVE MACON, BIBB COUNTY, GEORGIA 31206



SALES PRICE: \$105,000

LOCATION OVERVIEW

- **Immediate access to Interstate 475**, providing efficient circulation around the Macon metropolitan area
- Approximately **4 miles to Interstate 75**, a primary north-south corridor connecting Atlanta to Florida
- Approximately **7 miles to Interstate 16**, offering direct east-west access to Savannah and the Port of Savannah
- Located along **Columbus Road (US-80)**, a key arterial serving South Macon and surrounding industrial areas
- Central Georgia location allows **efficient distribution throughout the Southeast**
- Convenient access for **truck traffic, freight movement, and regional logistics operations**

PROPERTY OVERVIEW

- **Prime Corner Location:** 1.6± acre development site with excellent visibility and access
- **Frontage:** 182'± on Columbus Road and 275'± on Interstate Drive
- **Topography:** Level site at road grade, ideal for immediate development
- **Utilities:** All utilities available to the property
- **Zoning:** PDS (Planned Development Single Use) allowing flexible commercial and light industrial uses
- **Tax Bill:** 2025 Property tax bill \$176

ARTHUR P BARRY III, SIOR
478.731.8000 Cell
abarry@cbcgeorgia.com

990 RIVERSIDE DRIVE • MACON, GA 31021 • 478.746.8171 • CBCMACON.COM



**COLDWELL BANKER
COMMERCIAL**

EBERHARDT & BARRY

Revised 5/22/26

SALE

PRIME WAREHOUSE / DISTRIBUTION DEVELOPMENT SITE

5025 COLUMBUS ROAD @ INTERSTATE DRIVE
 MACON, BIBB COUNTY, GEORGIA 31206



ARTHUR P BARRY III, SIOR
 478.731.8000 Cell
 abarry@cbcgeorgia.com

990 RIVERSIDE DRIVE • MACON, GA 31021 • 478.746.8171 • CBCMACON.COM



SALE

PRIME WAREHOUSE / DISTRIBUTION DEVELOPMENT SITE

5025 COLUMBUS ROAD @ INTERSTATE DRIVE
MACON, BIBB COUNTY, GEORGIA 31206



ARTHUR P BARRY III, SIOR
478.731.8000 Cell
abarry@cbcgeorgia.com

990 RIVERSIDE DRIVE • MACON, GA 31021 • 478.746.8171 • CBCMACON.COM



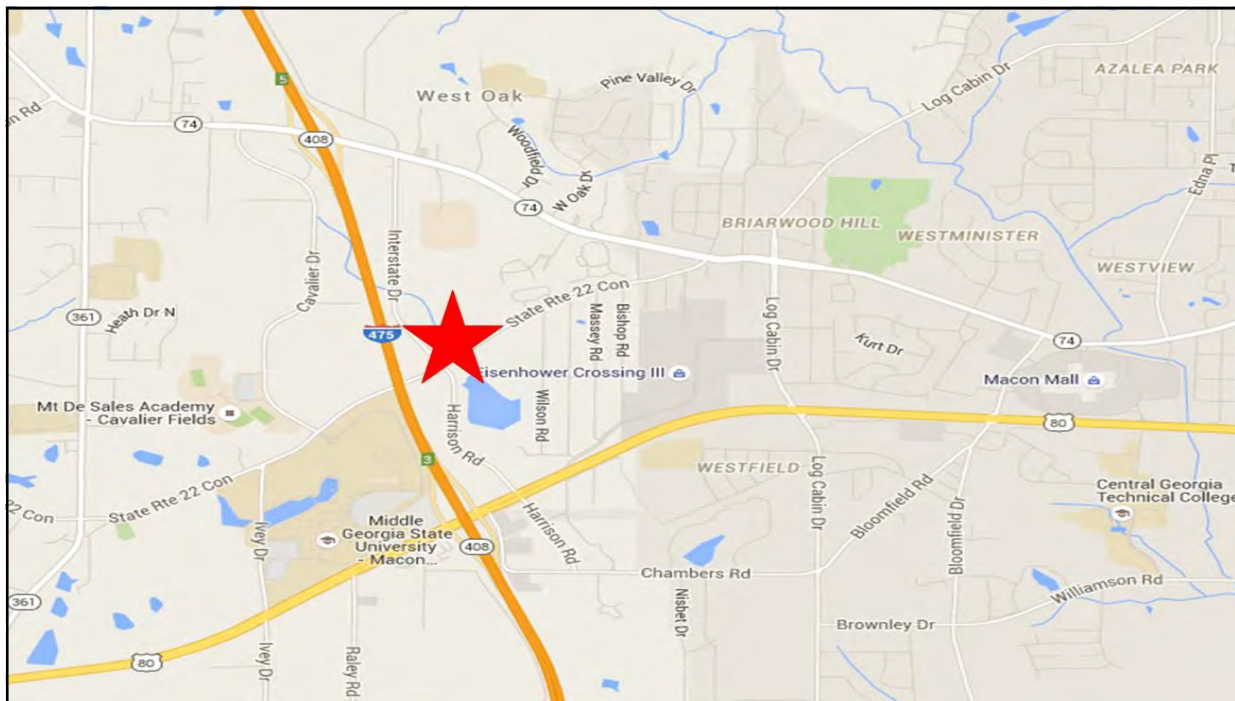
COLDWELL BANKER
COMMERCIAL

EBERHARDT & BARRY

SALE

PRIME WAREHOUSE / DISTRIBUTION DEVELOPMENT SITE

**5025 COLUMBUS ROAD @ INTERSTATE DRIVE
MACON, BIBB COUNTY, GEORGIA 31206**



ARTHUR P BARRY III, SIOR
478.731.8000 Cell
abarry@cbcgeorgia.com



**COLDWELL BANKER
COMMERCIAL**

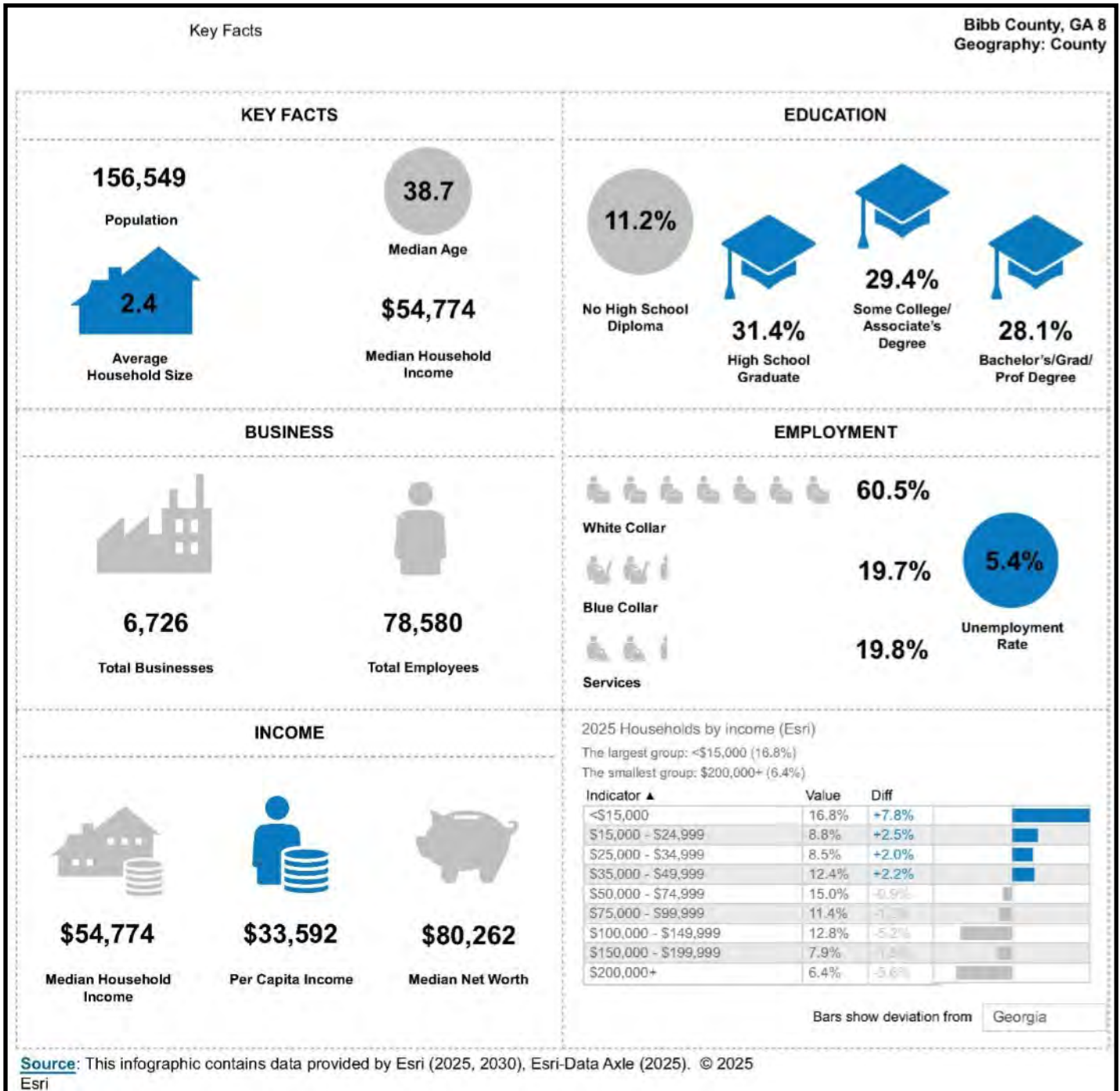
EBERHARDT & BARRY

990 RIVERSIDE DRIVE • MACON, GA 31021 • 478.746.8171 • CBCMACON.COM

SALE

PRIME WAREHOUSE / DISTRIBUTION DEVELOPMENT SITE

5025 COLUMBUS ROAD @ INTERSTATE DRIVE
 MACON, BIBB COUNTY, GEORGIA 31206



ARTHUR P BARRY III, SIOR
 478.731.8000 Cell
 abarry@cbcgeorgia.com

990 RIVERSIDE DRIVE • MACON, GA 31021 • 478.746.8171 • CBCMACON.COM



**COLDWELL BANKER
 COMMERCIAL**
 EBERHARDT & BARRY