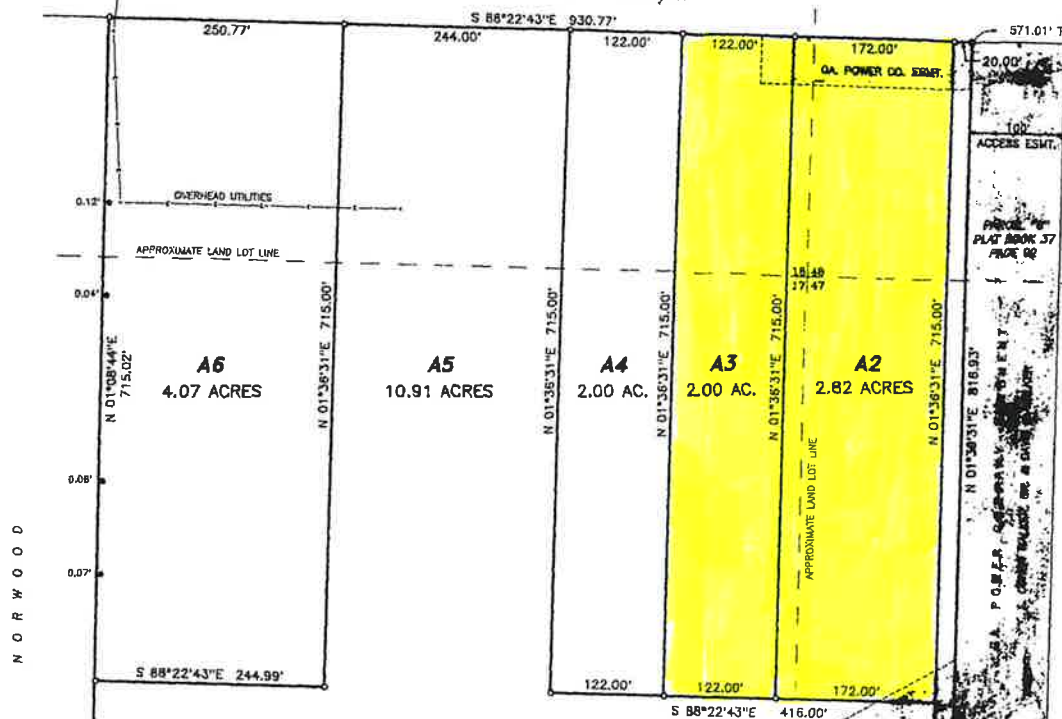


VALLEY DRIVE 80'R/W



N O R W O O D

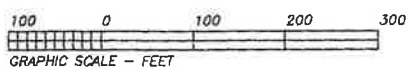


NOTE: TRACT A1 IS TO BE COMBINED WITH PARCEL "D" UNDER ONE OWNERSHIP

Doc ID: C088640001 Type: PLA
 Filed: 10/09/2001 at 04:12:00 PM
 Fee Amt: Page 1 of 1
 Houston, Ga. Clerk Superior Court
 Carolyn V. Sullivan Clerk
 58 89

APPROVED FOR RECORDING

Brent Cunningham
 Planning and Zoning Department
 City of Perry, Georgia
 Date: 5 October, 2001



NOW OR FORMERLY CENTRAL OF GEORGIA RAILROAD - 150' R/W
 PARCEL "D" - 17.171 ACRES - SEE PLAT BOOK 37, PAGE 92

CURVE DATA

CURVE	RADIUS	ARC	CHORD	BEARING
C1	2087.40'	123.93'	123.92'	N 63°18'37"E
C2	2087.40'	230.00'	228.88'	N 88°08'40"E
C3	2137.40'	228.57'	228.48'	N 88°02'52"E

LINE DATA

LINE	BEARING	DISTANCE
L1	N 28°00'00"W	40.01'
L2	N 01°36'31"E	66.69'

LEGEND:

- IRON REBAR FOUND
- 1/2" IRON REBAR SET
- CONCRETE POWER POLE
- WOOD POWER POLE
- 40' ACCESS EASEMENT
- - - GA. POWER CO. EASEMENT

REFERENCE:

SURVEY FOR L. COHEN WALKER, SR. & DAVID G. WALKER;
 PARCELS "A", "B", "C", & "D"; BY RICHARD L. JONES;
 DATED JULY 24, 1989 AND RECORDED IN PLAT BOOK 37,
 PAGE 92.



The field data upon which this plat is based has a closure precision of one foot in 75,234 feet and an angular error of 02" per angle point and was adjusted using the Least Squares Method. Measurements were made using a Topcon GTS-3 Total Station. This plat has been calculated for closure and is found to be accurate within 1 foot in 100,000+ feet.
 FIELD WORK COMPLETED 08-26-01

THIS SURVEYOR DOES NOT GUARANTEE THAT ALL EASEMENTS WHICH MAY AFFECT THIS PROPERTY ARE SHOWN.

RESUBDIVISION OF
PARCEL "A" FOR RANDALL HAMMOCK
 IN LAND LOTS 17, 18, 47, & 48 10TH LAND DISTRICT
 HOUSTON COUNTY PERRY, GEORGIA
 OCTOBER 1, 2001 SCALE: 1" = 100'

Brent Cunningham and Co., Inc.
 LAND SURVEYS
 P.O. BOX 3546, 31088-3546 • 101 McARTHUR BLVD, 31093
 WARNER ROBINS, GEORGIA • PHONE/FAX: 478-922-8518