

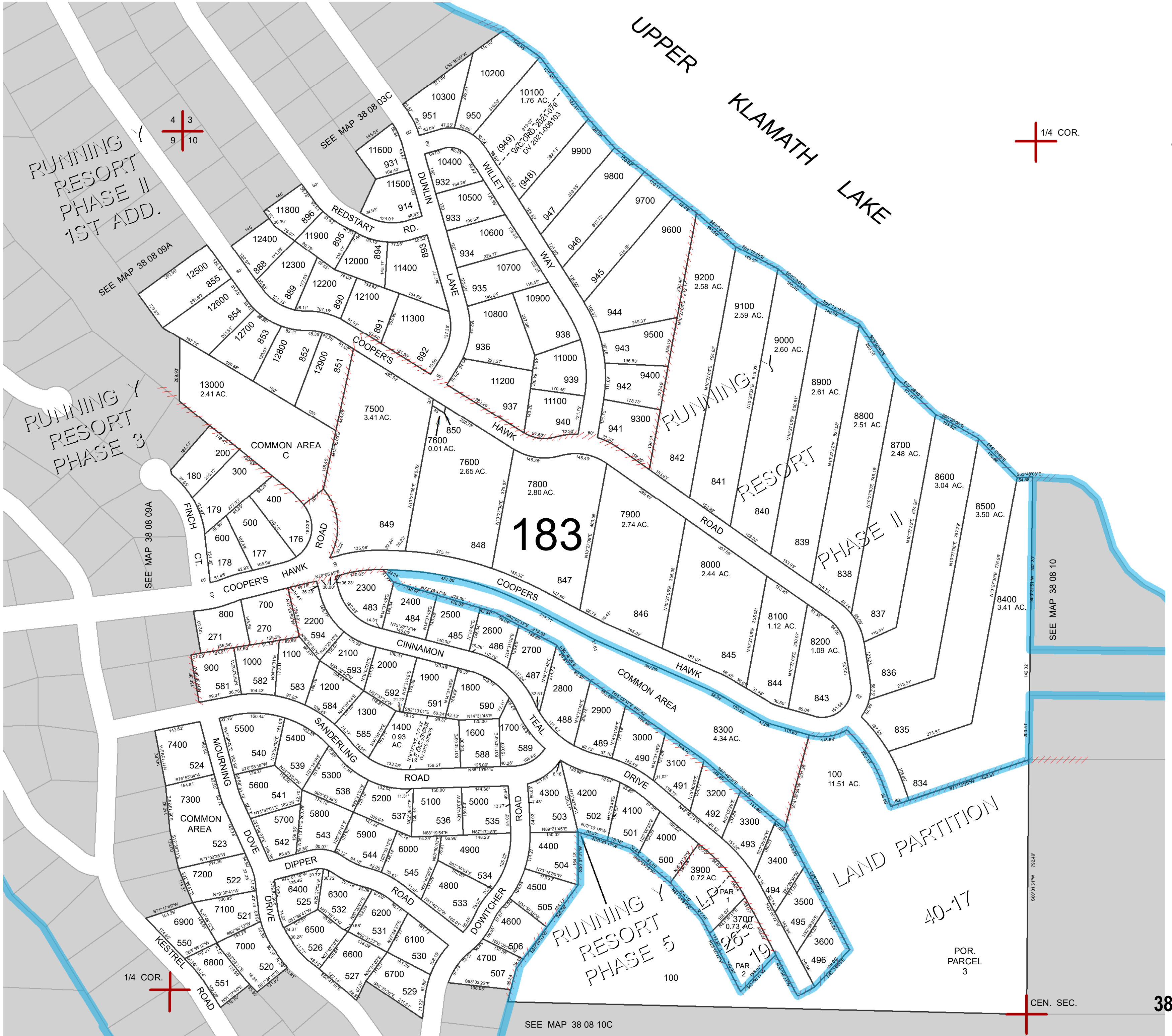
THIS MAP WAS PREPARED FOR ASSESSMENT PURPOSE ONLY

Revised: 2/25/2025

# NW1/4 SEC. 10T.38S. R.08E. W.M. KLAMATH COUNTY

38 08 10B

1" = 200'



Cancelled No.  
1500  
3800  
10000

38 08 10B