

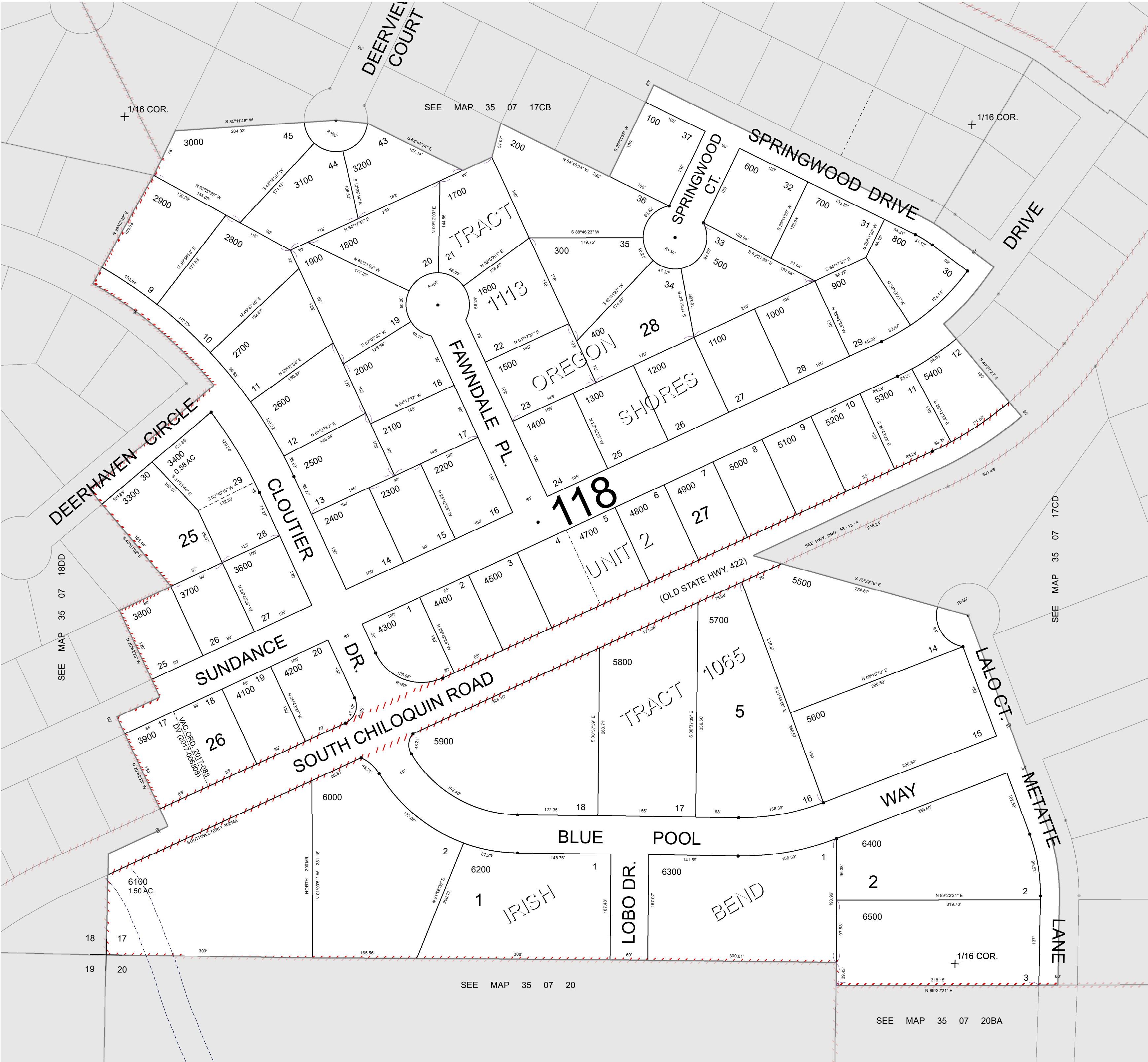
THIS MAP WAS PREPARED FOR ASSESSMENT PURPOSE ONLY

# SW 1/4 SW 1/4 SEC.17 T.35S. R.07E. W.M. KLAMATH COUNTY

35 07 17CC

Revised: 8/26/2021

1" = 100'



- Cancelled No.
- 5400 M1 & M2
- 5600 M1 & M2
- 6400 M1 & M2
- 6500 M1 & M2
- 4600
- 4000
- 3500

35 07 17CC