

# Lot 2C Clyde Farrell Road, Pittsboro

\$ 750,000

13.968 acres



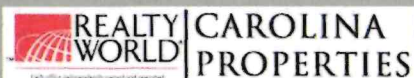
## For Sale

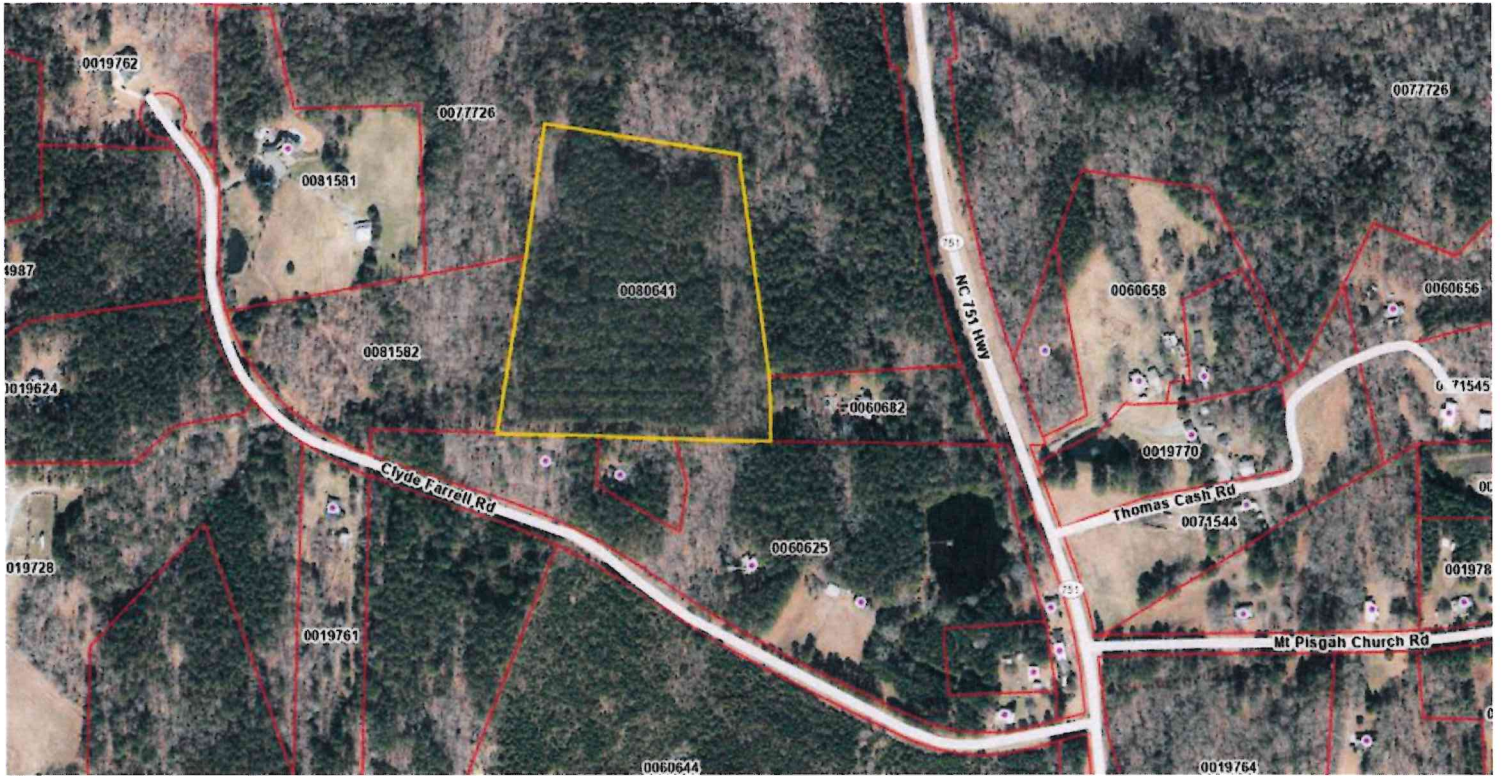
Rare opportunity to own 13.968 unrestricted acres adjoining U.S. Government Jordan Lake land, offering exception privacy, versatility and close proximity to the recreational amenities of Jordan Lake. This level parcel presents an ideal setting for a private estate, country homestead, recreational retreat or future investment. Access is provided via an easement, enhancing the property's private and secluded setting while offering endless potential with the freedom of unrestricted use. Conveniently located with easy access to Apex, Chapel Hill and RTP, while maintaining the tranquility of country living. Engineered septic system likely required for residential construction. Additional acreage potentially available.



**Eric Andrews, ALC**  
(919) 542-0523  
eric@ericandrewsrealtor.com

73 Hillsboro Street (P.O. Box 1400)  
Pittsboro, NC 27312  
Txt (919) 548-1014





D.B. 396 PG. 685

- 6 - 7
- 7 - 8
- 8 - 9
- 9 - 10
- 10 - 11
- 11 - 12
- 12 - 13
- 13 - 14

