

South Butler Springs Mini Farm

897 South Butler Springs Road, Forest Home, Alabama 36030

Kent McNaughton
334-437-1774
kent@saundersrealestate.com

PROPERTY OVERVIEW



Sale Price

\$340,000

Offering Summary

Acreage:	7.5 ± acres
Price / Acre:	\$45,333
State:	Alabama
City:	Forest Home
County:	Butler
Property Type:	Acreage and Estates, Farms and Cropland, Hunting and Recreational

Property Overview

Nestled on approximately 7.5 acres in the peaceful countryside of Forest Home, Alabama, this versatile farm property offers endless possibilities for agricultural, recreational, or homestead living. With a combination of functional farm infrastructure and open land, this property is ready for livestock, gardening, storage, or a variety of rural pursuits.

The property features two large 36' x 110' pole barns, including one with a recently installed new roof, providing ample space for equipment, hay, vehicles, or workshop use. A 40' x 400' poultry house, equipped with gas heat and evaporative cooling, will be inactive at the time of sale and presents a unique opportunity for storage, livestock housing, or other agricultural uses.

A 2001 16' x 80' two bed and two bath mobile home is sheltered beneath a protective pole barn cover, offering comfortable living accommodations while enjoying the surrounding acreage. The property is well-equipped with two working wells, county water service, power, and an 80-kW diesel generator, providing valuable utility and backup power capabilities.

A portion of the acreage is already fenced for cattle, making it easy to continue livestock operations. With plenty of open space, the farm is equally suited for goats, horses, hobby farming, or creating a large garden. Whether you're seeking a productive farm, a self-sufficient homestead, or a quiet rural retreat, this property offers exceptional potential and country charm.

SPECIFICATIONS & FEATURES



Specifications & Features

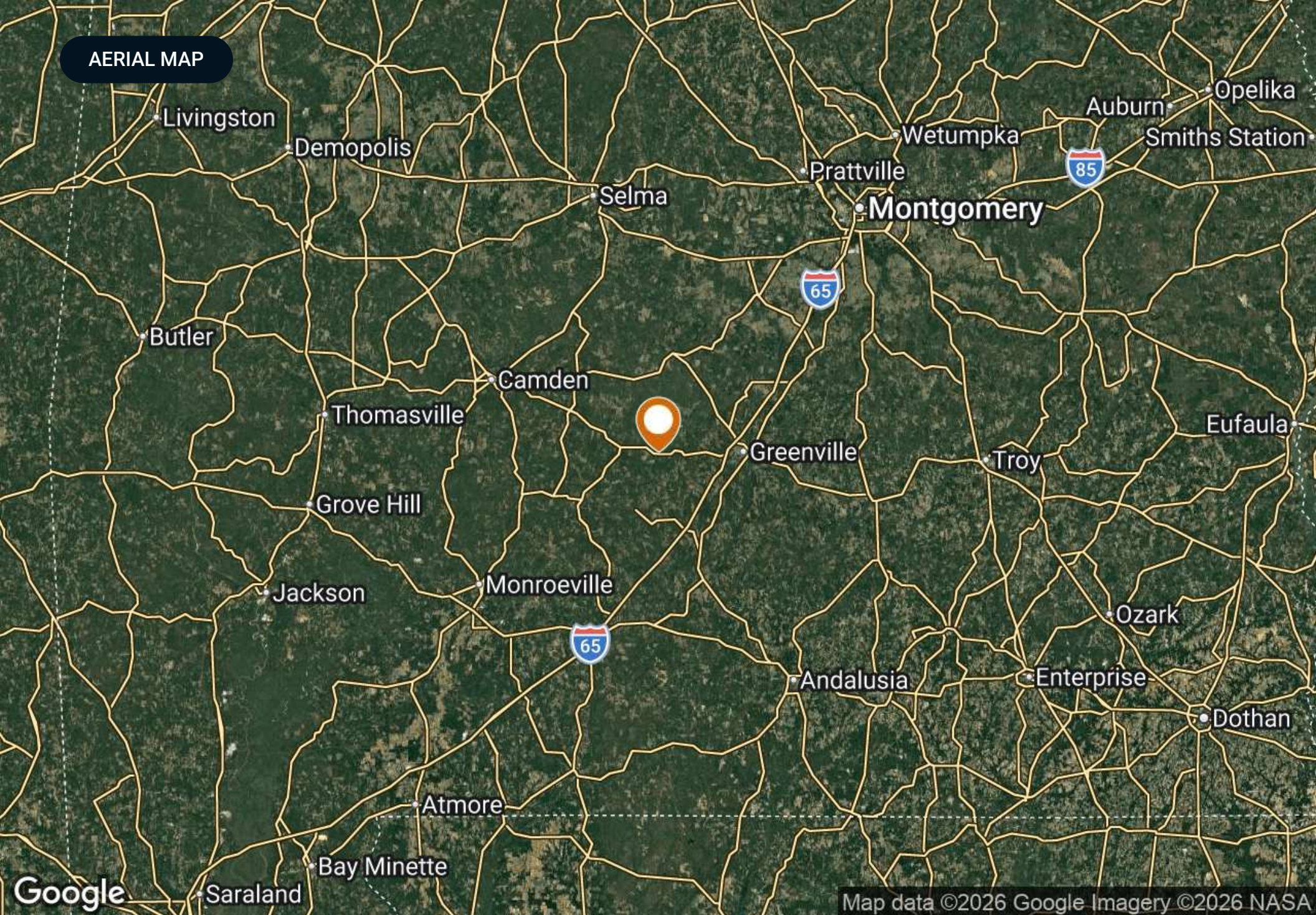
Uplands / Wetlands: 100% uplands

Soil Types: Orangeburg sandy loam
Lynchburg sandy loam

Nearest Point of Interest: Forest Home, AL: 4 ± miles

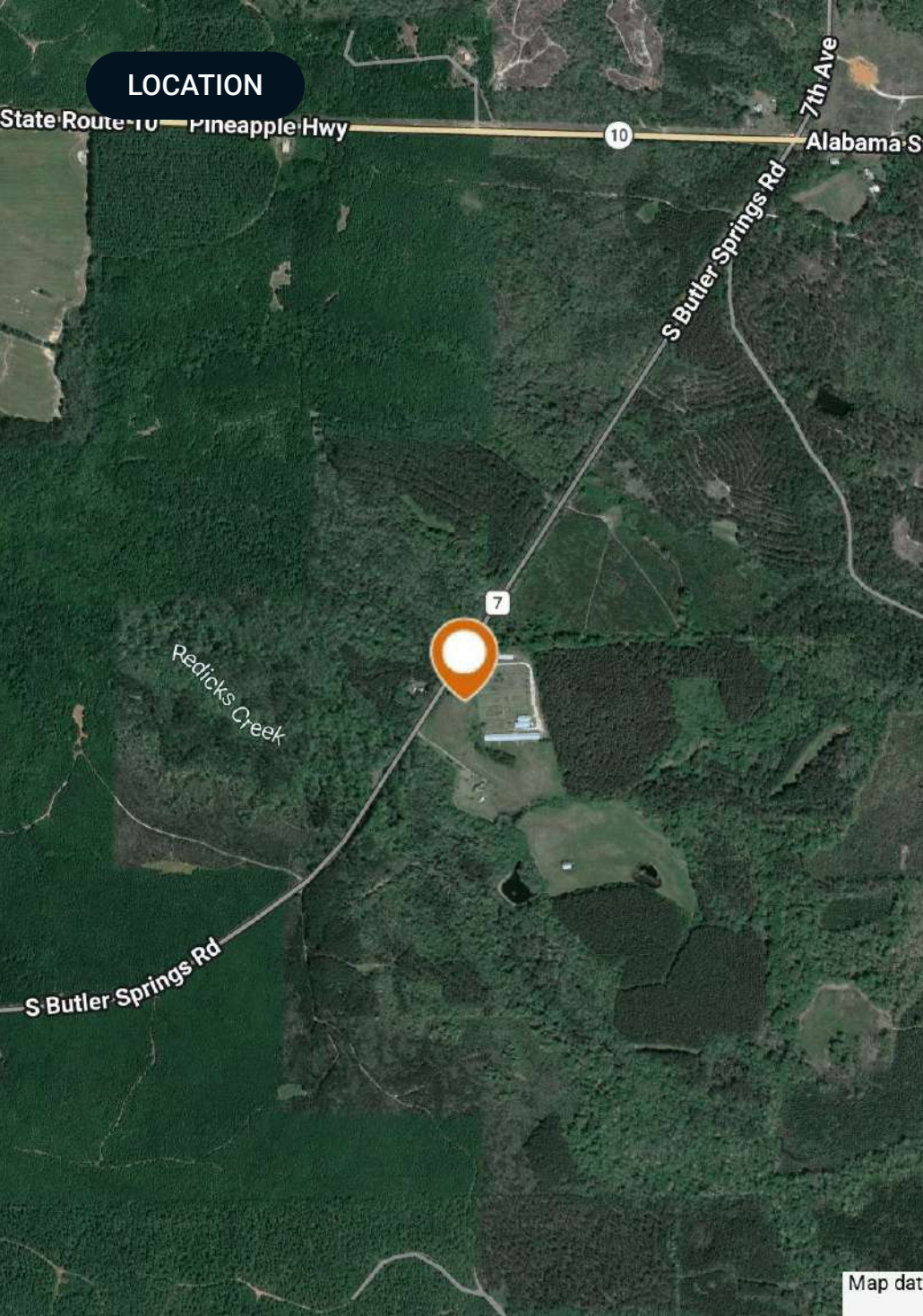
- Structures & Year Built:**
- Two large 36' x 110' pole barns (including one with a recently installed new roof)
 - A 40' x 400' poultry house equipped with gas heat and evaporative cooling (will be inactive at the time of sale and presents a unique opportunity for storage/livestock housing/or other agricultural uses)
 - A 2001 16' x 80' two bed and two bath mobile home

AERIAL MAP



Google

Map data ©2026 Google Imagery ©2026 NASA



LOCATION

Location & Driving Directions

Parcel: 100608270000005001

GPS: 31.8127883, -86.843283

Driving Directions:

- From Forest Home, AL, head south on 7th Avenue for 2.9 miles
- Continue onto South Butler Springs Road for 0.8 miles and the property will be on the left

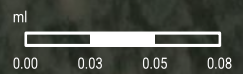
Showing Instructions:

Contact listing agent for showing instructions.

PROPERTY OUTLINE

South Butler Springs Mini Farm

- Polygon
- Census Roadways TIGER
- County Roads
- Interstates
- State Roads
- Highways



ADDITIONAL PHOTOS



ADDITIONAL PHOTOS



ADVISOR BIOGRAPHY



Kent McNaughton

Senior Advisor

kent@saundersrealestate.com

Direct: **877-518-5263 x389** | Cell: **334-437-1774**

Professional Background

Kent McNaughton is a Senior Advisor at Saunders Real Estate, serving South and Central Alabama.

A 1993 graduate of Auburn University in Montgomery, Kent holds a degree in Elementary Education. He went on to earn his master's degree in Elementary Education, along with certificates in both counseling and administration. Kent worked as a teacher, counselor and administrator for over 24 years in the Butler County School System.

As a teenager, Kent worked alongside his father manufacturing soft plastic fishing lures, while also growing up hunting and fishing in Butler County. His love of fishing and the outdoors prompted him to become the founder and owner of NetBait, a fishing tackle company he later sold to a national distributor in 2014.

Kent specializes in rural and recreational land, with a focus on small to mid-sized tracts suited for homesteads, mini farms, and transitional land. His experience includes properties with a mix of timber and open ground, hobby farms, and recreational tracts with strong wildlife presence, as well as properties offering flexibility for single-family homesites, livestock, or future subdivision. His local knowledge allows him to effectively position properties that balance usability, location, and long-term value.

Kent spends much of his spare time with his family, hunting and fishing on the family farm. Through his career in education and his involvement in the fishing and cattle communities, he has developed a wide network throughout Alabama, as well as extensive knowledge of the state's land and waterways.

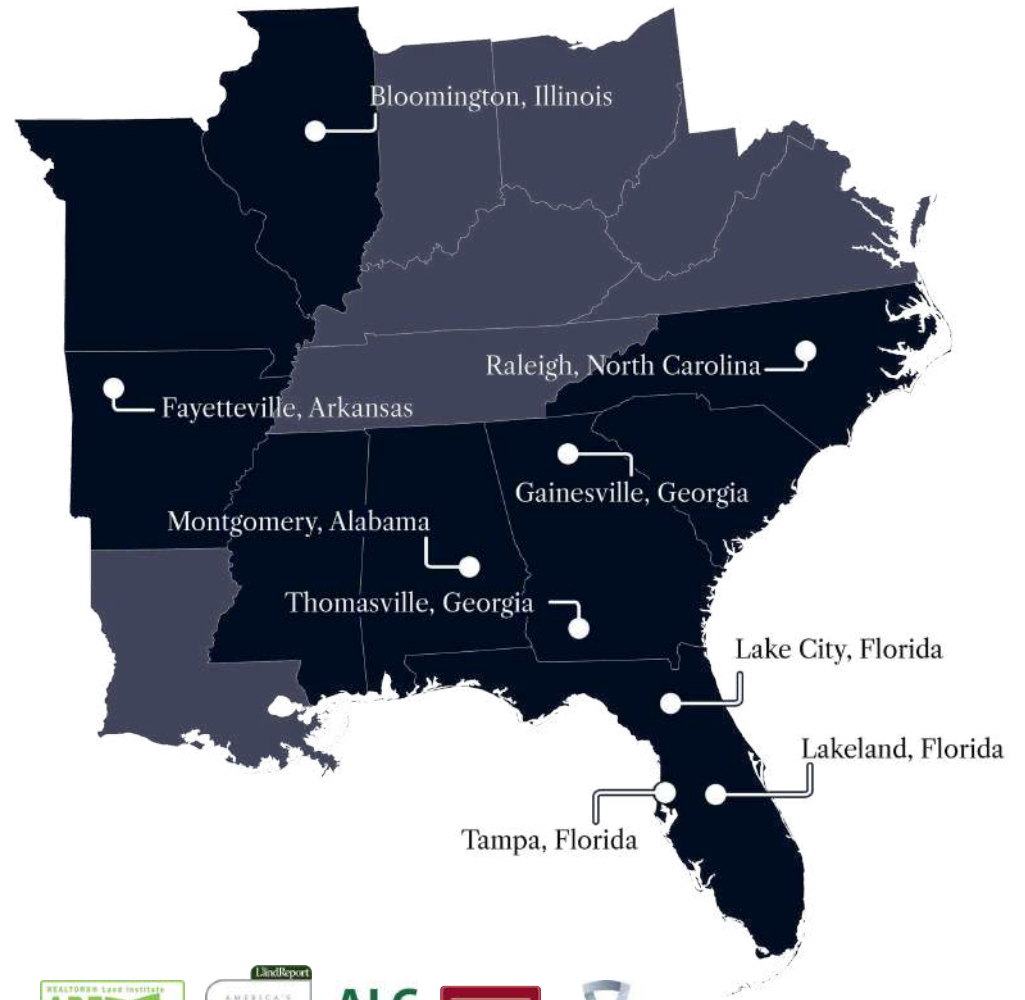
Kent resides in Greenville with his wife, Chanda, and has four children: Erica, Madison, Parker and Caden.

Kent specializes in:

- Acreage and Estates
- Farms and Cropland
- Hunting and Recreational Land
- Timberland
- Waterfront
- Residential Development



At Saunders Real Estate, we deliver full-service real estate solutions, built on more than 30 years of trusted experience. Our dedicated teams offer tailored guidance backed by deep regional insight and a proven track record. We believe that successful outcomes start with strong relationships built on trust and a shared commitment to your goals.



877-518-5263 • info@saundersrealestate.com



©2026 Saunders Real Estate, LLC. All rights reserved. The information contained in this communication is strictly confidential. This information has been obtained from sources believed to be reliable but has not been verified. NO WARRANTY OR REPRESENTATION, EXPRESS OR IMPLIED, IS MADE AS TO THE CONDITION OF THE PROPERTY (OR PROPERTIES) REFERENCED HEREIN OR AS TO THE ACCURACY OR COMPLETENESS OF THE INFORMATION CONTAINED HEREIN, AND SAME IS SUBMITTED SUBJECT TO ERRORS, OMISSIONS, CHANGE OF PRICE, RENTAL OR OTHER CONDITIONS, WITHDRAWAL WITHOUT NOTICE, AND TO ANY SPECIAL LISTING CONDITIONS IMPOSED BY THE PROPERTY OWNER(S). ANY PROJECTIONS, OPINIONS OR ESTIMATES ARE SUBJECT TO UNCERTAINTY AND DO NOT SIGNIFY CURRENT OR FUTURE PROPERTY PERFORMANCE.