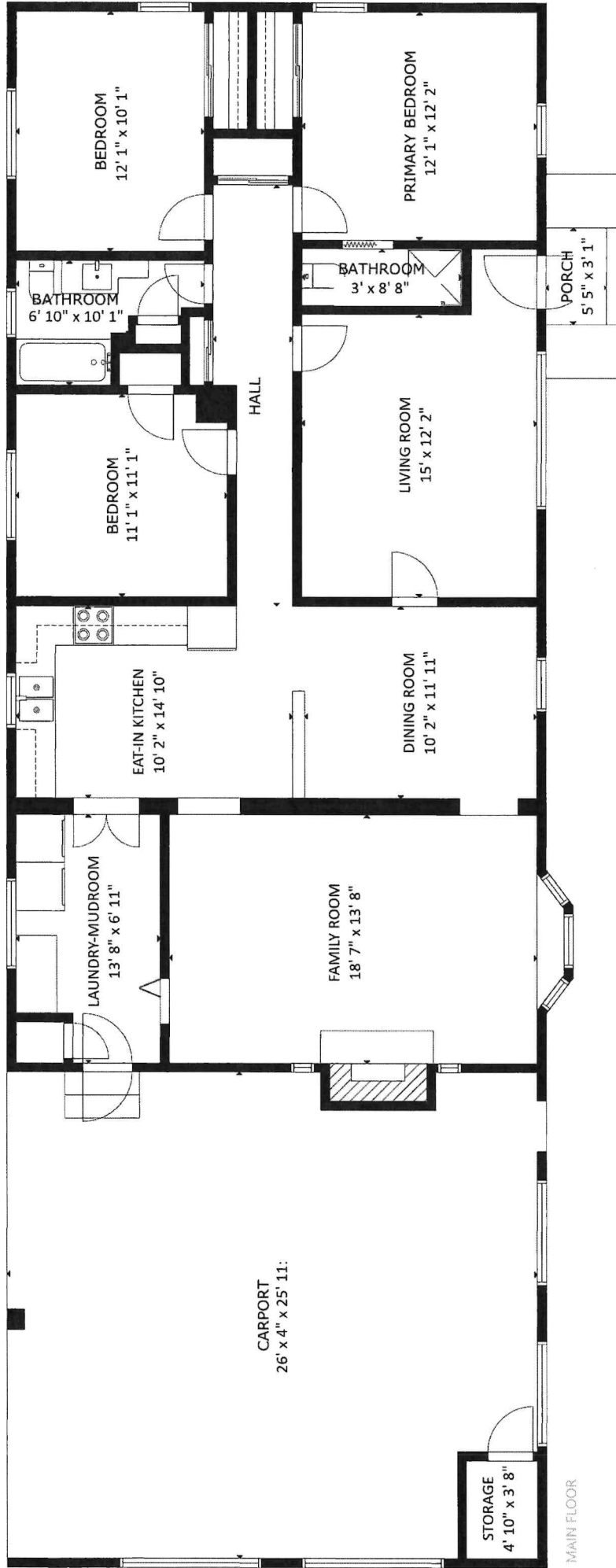


31 Melvin Clark Road
Siler City, NC, 27344



The following dimensions are approximate interior wall to wall dimensions, measured on Jits, from the widest portion of each room, then calculated to Feet/Inches from Rounded Decimal Feet. Information deemed reliable, but not guaranteed.

MAIN FLOOR

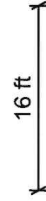
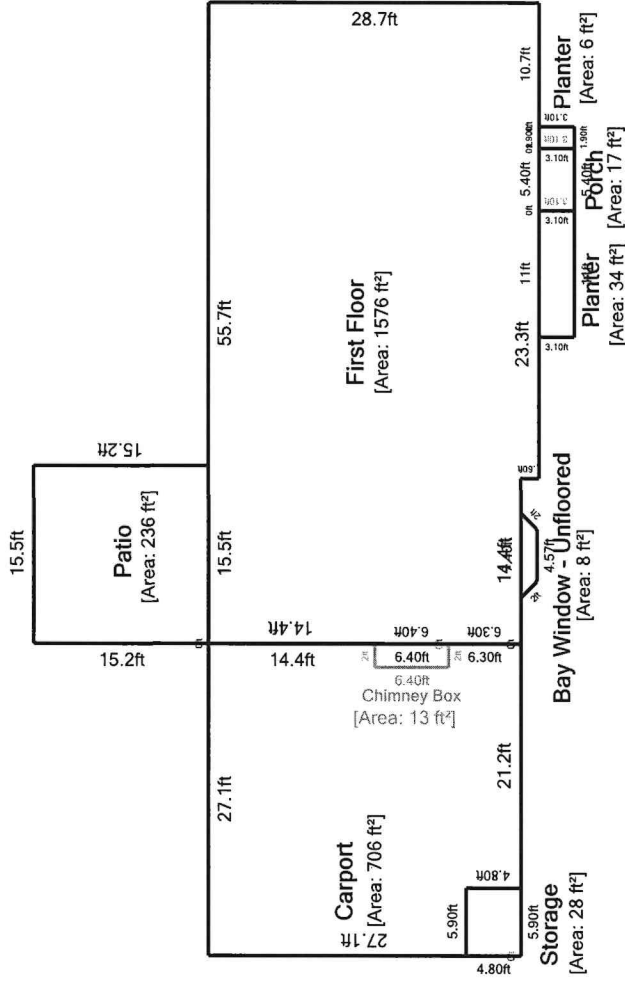
Room Dimension Summary	Prepared for	Eric Andrews	Address:	31 Melvin Clark Road Siler City, NC 27344
			Measured by	Laura Fuelleman
<p>The following dimensions are approximate interior wall to wall dimensions, measured from the widest portion of each room. Exterior dimensions may be either are approximate inner or outer dimensions - tending to be less exact</p>				
<p>Information deemed reliable, but not guaranteed.</p>				

	Length in Feet - Parallel to Front Facade	Width in Feet - Perpendicular to Front Facade	Parallel to Front Facade		Perpendicular to Front Facade	
			Calculated Feet/Inches from Rounded	Decimal Feet	Calculated Feet/Inches from Rounded	Decimal Feet
Main Floor						
Living Room	15	12.2	15 ft 0 in	12.2	12 ft 2 in	2 in
Dining Room	10.2	11.9	10 ft 2 in	11.9	11 ft 11 in	11 in
Eat in Kitchen	10.2	14.8	10 ft 2 in	14.8	14 ft 10 in	10 in
Family Room	18.6	13.7	18 ft 7 in	13.7	13 ft 8 in	8 in
Laundry-Mudroom	13.7	6.9	13 ft 8 in	6.9	6 ft 11 in	11 in
Primary Bedroom	12.1	12.2	12 ft 1 in	12.2	12 ft 2 in	2 in
Primary Bathroom	3	8.7	3 ft 0 in	8.7	8 ft 8 in	8 in
Bedroom - Back Corner	12.1	10.1	12 ft 1 in	10.1	10 ft 1 in	1 in
Bathroom	6.8	10.1	6 ft 10 in	10.1	10 ft 1 in	1 in
Bedroom- Back Center	11.1	11.1	11 ft 1 in	11.1	11 ft 1 in	1 in
Front Porch	5.4	3.1	5 ft 5 in	3.1	3 ft 1 in	1 in
Patio	15.5	15.2	15 ft 6 in	15.2	15 ft 2 in	2 in
Carport	26.3	25.9	26 ft 4 in	25.9	25 ft 11 in	11 in
Carport storage	4.8	3.7	4 ft 10 in	3.7	3 ft 8 in	8 in

Outbuildings	Length in Feet - Parallel to Front Facade	Width in Feet - Perpendicular to Front Facade	Parallel to Front Facade		Perpendicular to Front Facade	
			Calculated Feet/Inches from Rounded	Decimal Feet	Calculated Feet/Inches from Rounded	Decimal Feet
Playhouse	7	9.3	7 ft 0 in	9.3	9 ft 4 in	4 in
Playhouse porch	7	4.3	7 ft 0 in	4.3	4 ft 4 in	4 in
Shelter	22	28	22 ft 0 in	28	28 ft 0 in	0 in
Attached shed	11.8	22	11 ft 10 in	22	22 ft 0 in	0 in

Sketch

Case Number: 202605-1 File Number: 202606
 Address: 31 Melvin Clark Road
 City / State: Pittsboro / NC Zip / County: 27312 /
 Borrower:
 Lender or Client: Eric Andrews
 Prepared By: Laura Fuelleman



Living Area	
First Floor	12.80 ft ²
Chimney Box	8.47 ft ²
Bay Window - Unfloored	34.10 ft ²
Planter	16.74 ft ²
Porch	5.89 ft ²
Planter	235.6 ft ²
Patio	706.09 ft ²
Carport	28.32 ft ²
Total Living Area (rounded):	1048 ft²

Nonliving Area	
Chimney Box	1575.55 ft ²
Bay Window - Unfloored	8 ft ²
Planter	17 ft ²
Porch	13 ft ²
Planter	34 ft ²
Patio	236 ft ²
Carport	706 ft ²
Total Non-Living Area (rounded):	1576 ft²

This document is designed to be a record of total finished square feet to aid the listing agent in gathering the square feet facts of the property. Measurements are obtained by physical observation of the property by a certified Home Measurement Specialist. Within every measurement project, some degree of art of opinion may be applied as well as rounding as set forth in the standards. Final finished square footage will be rounded to the nearest whole number with the goal of being within a 5% margin of error. Information deemed reliable, but not guaranteed.

